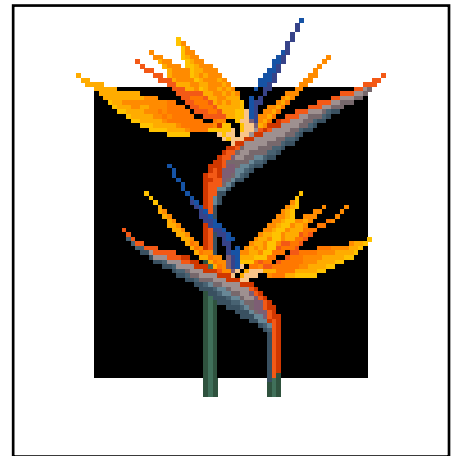


Erratum for Cross Stitch & Beading Issue No. 65

Bird of Paradise Chart page 25

☐ This symbol should be the heart symbol ☐

On the last column of the key on page 25,
QTY should be DBR 112 Green.



Medium Fuchsia page 46

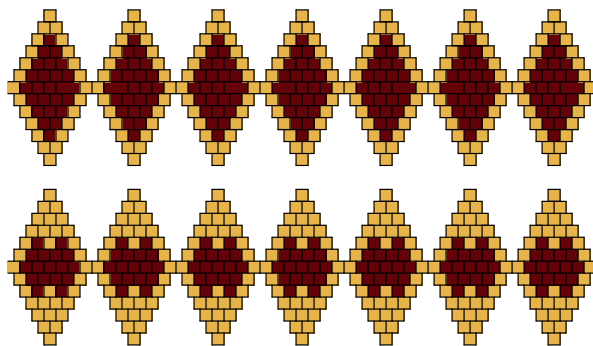
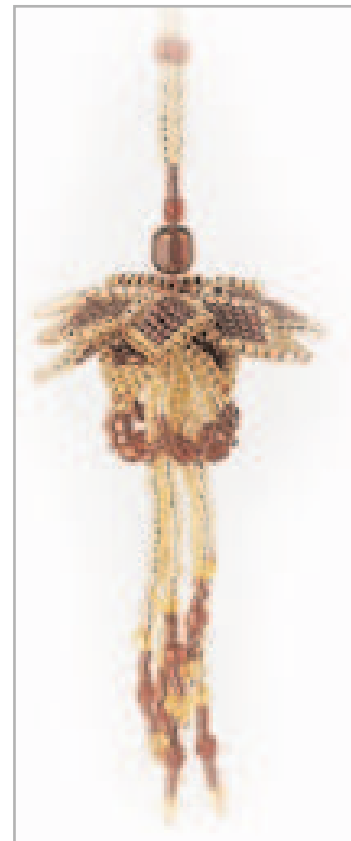
To make the decoration exactly the same as our model.

The top row: The triangle symbol should be worked in DBR 42 and the other two symbols worked in DBR105.

The bottom row: The triangle and black symbols should be worked in DBR 42 and the red circle symbol worked in DBR 105.

The chart as published on page 46 can also be worked using three colours if desired.

Below you will find a copy of the corrected chart to reflect the colour key printed for the Medium Fuchsia on page 46.



Sorry this was my fault as I do like to play around and/or test the designs if they are not mine and I didn't change the chart to reflect my stitching.....Jill

